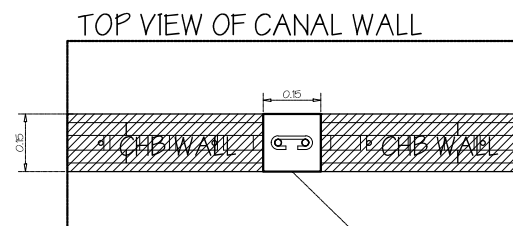


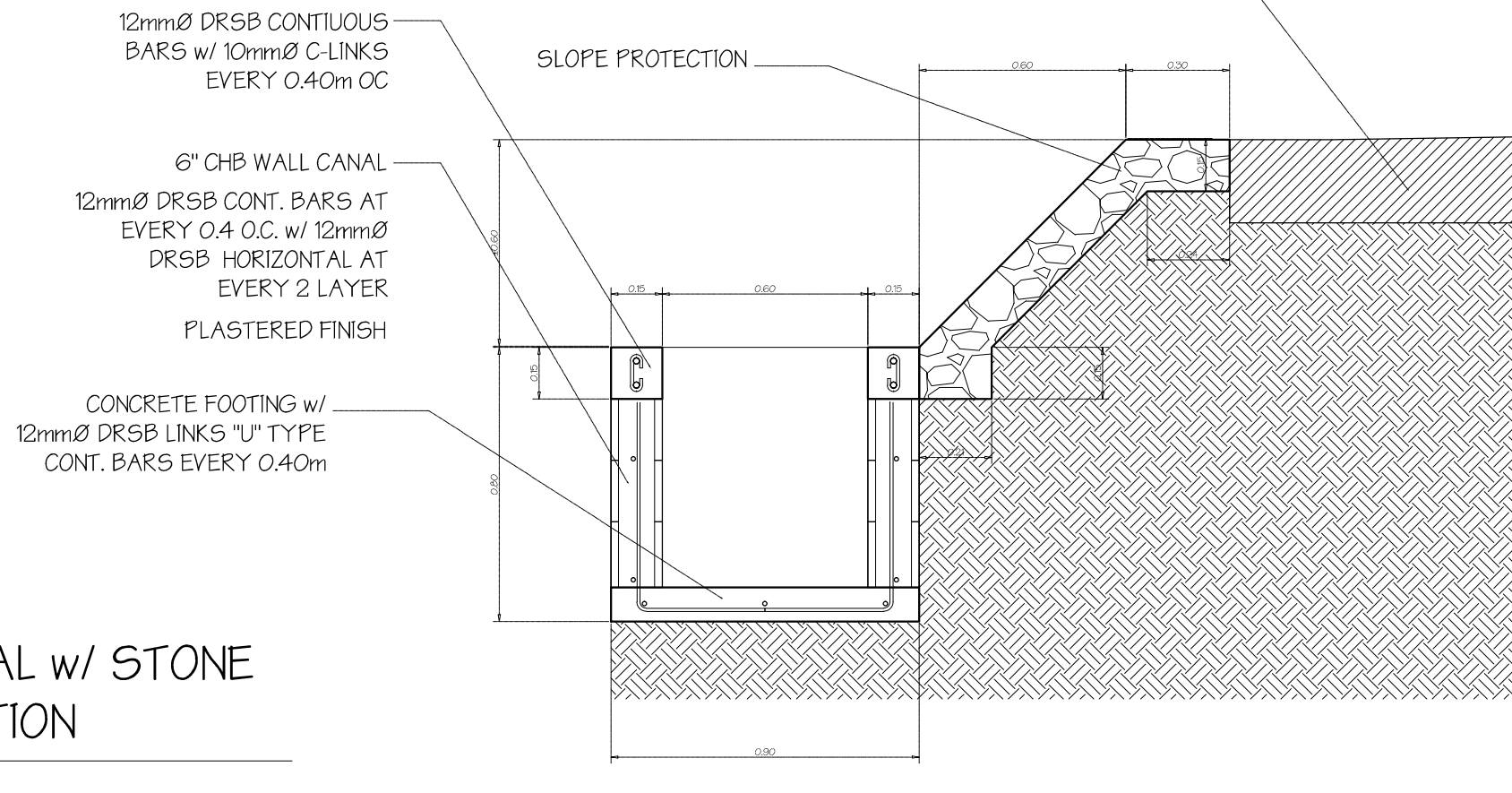
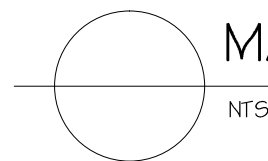
 SITE DEVELOPMENT PLAN - LOT 1
SCALE 1:600METERS

PROJECT TITLE:	PRODUCED BY:	PREPARED & DESIGNED BY:	REVIEWED BY:	NOTED BY:	RECOMMENDING APPROVAL:	APPROVED:	DESIGN BY: RBB		
IMPROVEMENT OF ROAD ALONG NIA CANAL AND SCREEN HOUSE CITY AREA PHILRICE - CES, MALIGAYA, CITY OF MUNOZ NUEVA ECUIA	PHYSICAL PLANT DIVISION INFRASTRUCTURE UNIT PHILRICE SCIENCE CITY OF MUNOZ, NUEVA ECUIA	JERRY P. GUYA ENGINEER II, PPD PHILRICE-CES	Arch. RENATO B. BAUT PPD DIVISION HEAD PHILRICE-CES	ARNOLD S. JULIANO REMO DIVISION HEAD PHILRICE-CES	SOPHIA T. BORJA OC, DED FOR ASF PHILRICE	Dr. JOHN C. DE LEON EXECUTIVE DIRECTOR PHILRICE	DATE: JAN 2023	A1	
							CADD BY: JPG		
							DATE: JAN 2023	1	4
							CHECKED BY: RBB		

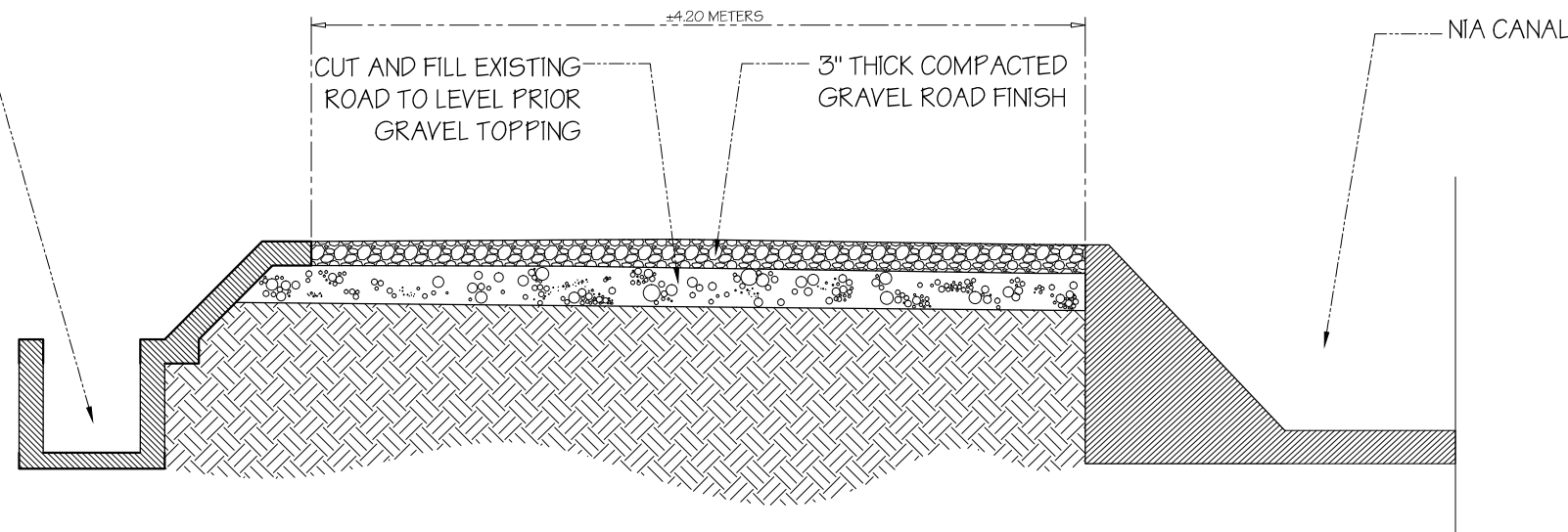


PROVISION OF 0.15m x 0.15m
POSTS EVERY 3 METERS
12mmØ DRSB CONTINUOUS
BARS w/ 10mmØ C-LINKS
EVERY 0.40m OC

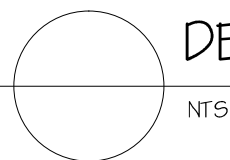
DETAIL A - EXPANDED CANAL w/ STONE MASONRY SLOPE PROTECTION

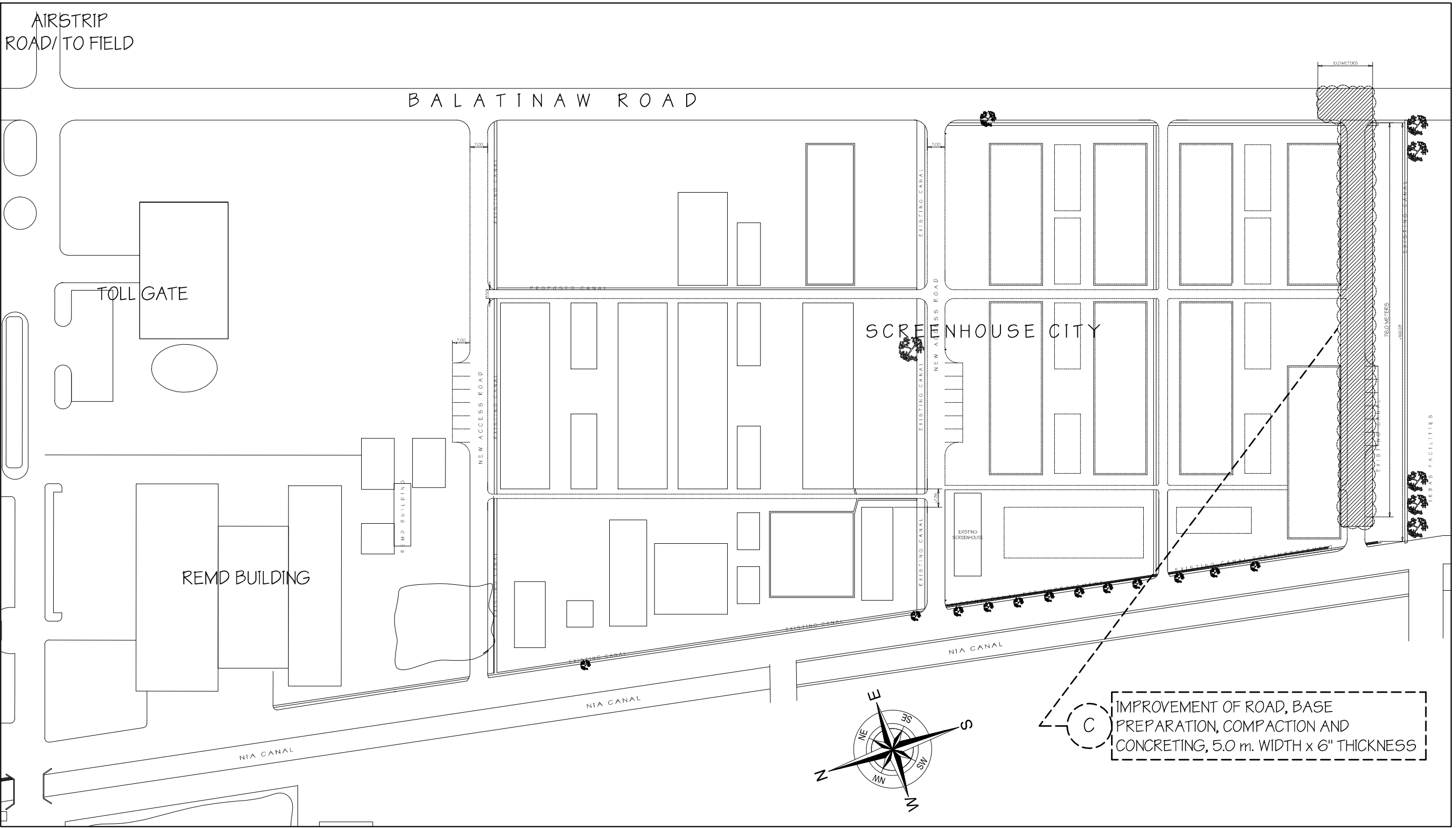


OPEN CANAL FLOOD
CONTROL WITH STONE
MASONRY SLOPE
PROTECTION




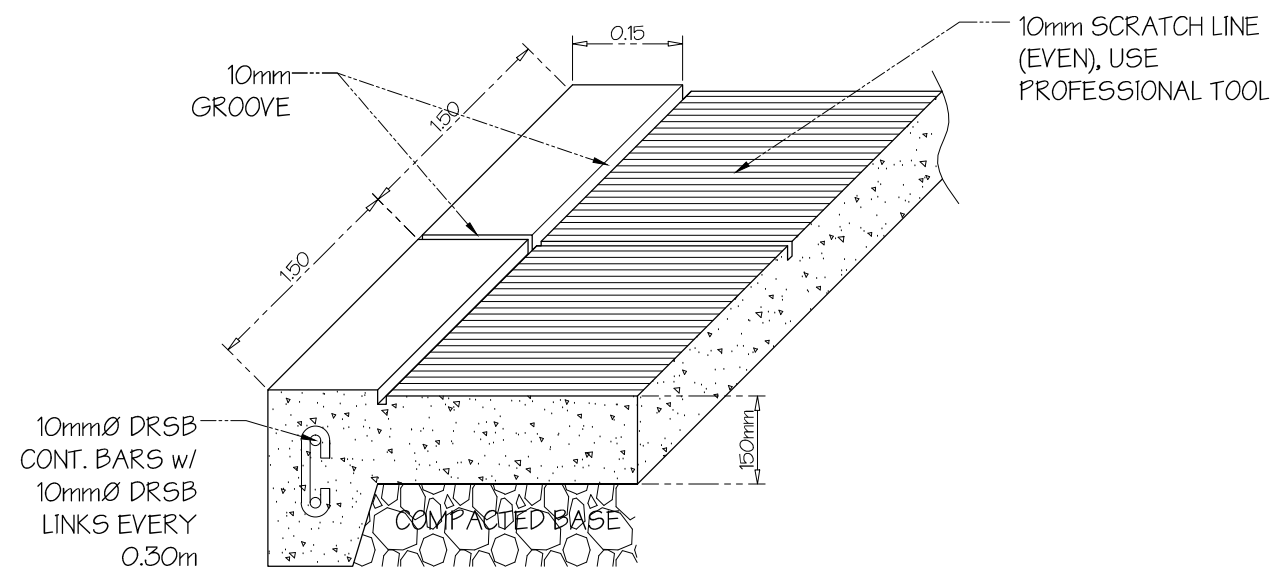
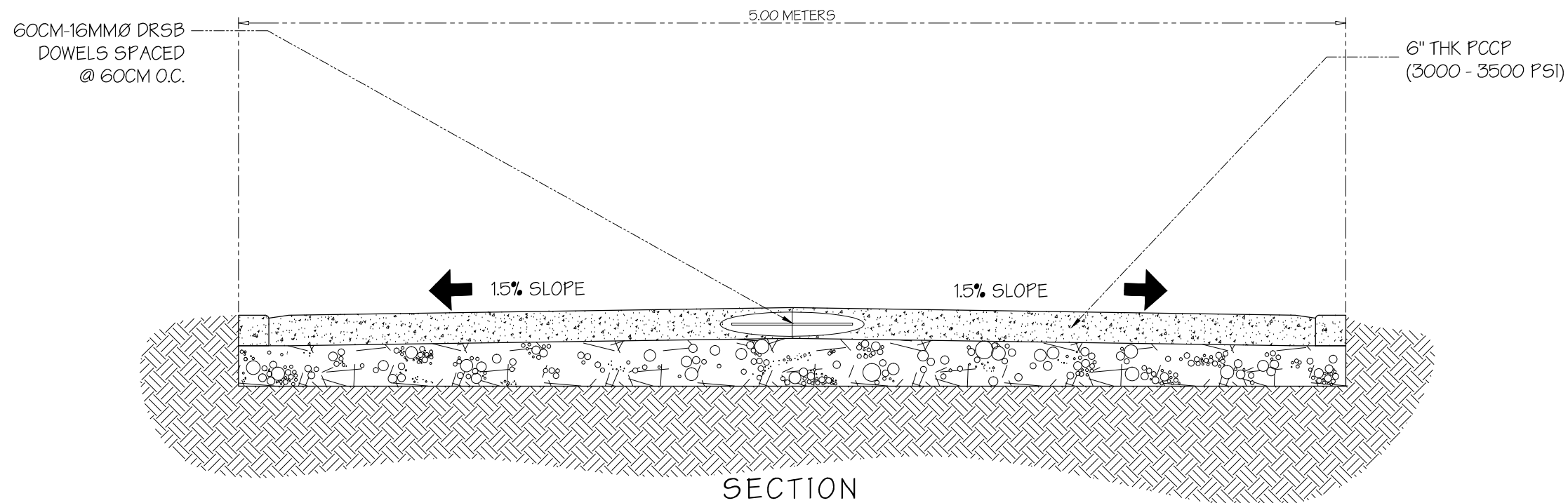
DETAIL B - COMPACTED GRAVEL FINISH ROAD





 SITE DEVELOPMENT PLAN - LOT II
SCALE 1:600METERS

 PHILIPPINE RICE RESEARCH INSTITUTE CENTRAL EXPERIMENT STATION MALIGAYA, MUNOZ CITY, NUEVA ECUIA	Drawings and Specifications duly signed, stamped or sealed, as instruments of service are the intellectual properties and documents of the architect, whether the object for which they are made is executed or not. It shall be unlawful for any person, without the consent of the architect or author of said documents, to duplicate or to make copies of said documents for use in the repetition of and for other projects or buildings, whether executed partly or in whole.	PROJECT TITLE:	PRODUCED BY:	PREPARED & DESIGNED BY:	REVIEWED BY:	NOTED BY:	RECOMMENDING APPROVAL:	APPROVED:	DESIGN BY: RBB	A3	
		IMPROVEMENT OF ROAD ALONG NIA CANAL AND SCREEN HOUSE CITY AREA	PHYSICAL PLANT DIVISION INFRASTRUCTURE UNIT PHILRICE SCIENCE CITY OF MUNOZ, NUEVA ECUIA	JERRY P. GUYA ENGINEER II, PPD PHILRICE-CES	Arch. RENATO B. BAJIT PPD DIVISION HEAD PHILRICE-CES	ARNOLD S. JULIANO REMO DIVISION HEAD PHILRICE-CES	SOPHIA T. BORJA OC, DED FOR ASF PHILRICE	Dr. JOHN C. DE LEON EXECUTIVE DIRECTOR PHILRICE-CES	DATE: JAN 2023 CADD BY: JPG		
		PHILRICE - CES, MALIGAYA, CITY OF MUNOZ NUEVA ECUIA							DATE: JAN 2023	3	4
									CHECKED BY: RBB		



DETAIL C - 6" CONCRETE ROAD DETAIL
NTS