

Harmful organisms in Philippine rice fields

MAJOR



YELLOW STEM BORER *Scirpophaga incertulas* (Walker)
Filipino name: dilaw na aksip
Damaging stage: larval stage
Plant part attacked: stem
Vulnerable crop stages: from tillering to reproductive
Damage characteristics: larvae bore into the rice stems and hollow out the stem completely; in young plants, the central leaf whorl does not unfold, turns brownish, and dries up (deadheart); in older plants, the panicle dries up with unfilled grains and turns white (whitehead)



WHITE STEM BORER *Scirpophaga innotata* (Walker)
Filipino names: puting aksip, puting bagumbong
Damaging stage: larval stage
Plant part attacked: stem
Vulnerable crop stages: tillering to reproductive
Damage characteristics: from tillering to reproductive
Damage characteristics: larvae bore into the rice stems and hollow out the stem completely; in young plants, the central leaf whorl does not unfold, turns brownish, and dries up (deadheart); in older plants, the panicle dries up with unfilled grains and turns white (whitehead)



BROWN PLANTHOPPER *Nilaparvata lugens* (Stål)
Filipino names: kayumangging hanip, kayumangging ngusong kabayo
Damaging stage: nymph and adult stages
Plant part attacked: leaf sheaths and blades
Vulnerable crop stages: all stages
Damage characteristics: plants turn yellow and dry up rapidly; hopperburn symptoms; transmits viral diseases causing ragged stunt, grassy stunt, and wilted stunt



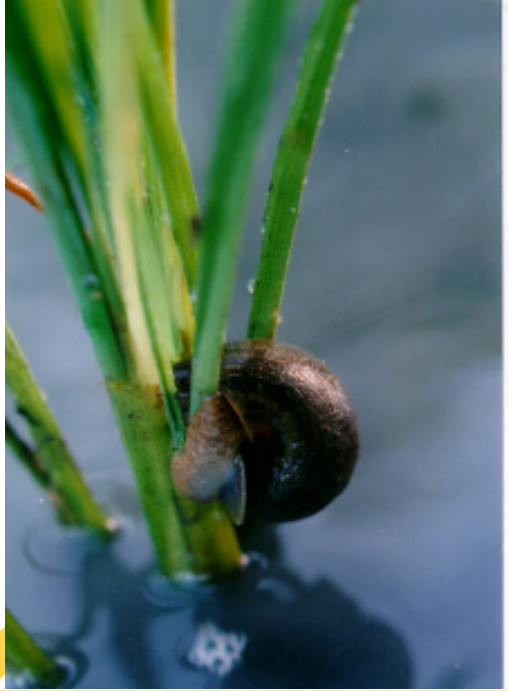
WHITE-BACKED PLANTHOPPER *Sogatella furcifera* (Horváth)
Filipino name: puting likod ngusong kabayo
Damaging stage: nymph and adult stages
Plant part attacked: leaf sheaths and blades
Vulnerable crop stages: from tillering to reproductive
Damage characteristics: heavy infestations make leaves dry and show burn symptoms (hopperburn)



GREEN LEAFHOPPER *Nephotettix* spp.
Filipino name: berdeng ngusong kabayo
Damaging stage: nymph and adult stages
Plant part attacked: leaf sheaths and blades
Vulnerable crop stages: from tillering to panicle initiation
Damage characteristics: transistor of tungro virus; yellow dwarf; heavy infestations may cause withering or wilting



RICE BLACK BUG *Scotinophara coarctata* (Fabricius)
Filipino name: itim na atangya
Damaging stage: nymph and adult stages
Plant part attacked: stems, tillers, and panicles
Vulnerable crop stages: from seedling to flowering
Damage characteristics: deadheart; reddish brown leaves; reduced tillers; in severe infestation young plants die and the whole field appears burnt (bug burn)



GOLDEN APPLE SNAIL *Pomacea canaliculata* (Lamarck)
Filipino name: golden kuhol
Damaging stage: young and adult snails
Plant part attacked: base of young seedlings
Vulnerable crop stages: 2-3 weeks after transplanting
Damage characteristics: severely damaged rice fields have missing hills and floating fragments of rice plants



RAT *Rattus argentiventer* (Robinson and Kloss)
Filipino name: daga
Plant part attacked: whole plant
Vulnerable crop stages: all stages
Damage characteristics: more damage occurs in the center of the rice field, resulting in eat-outs; cut stems or panicles

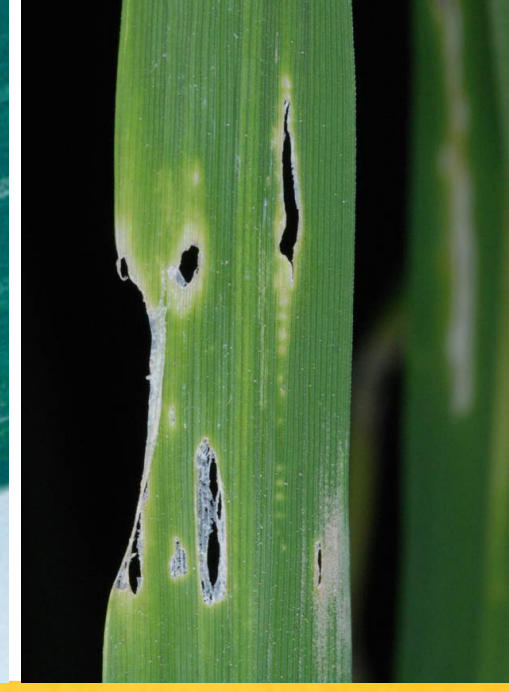
MINOR



LEAFFOLDER/LEAF ROLLER *Cnaphalocrosis medinalis* (Guen.)
Filipino names: magbibilot, maniniklop
Damaging stage: larval stage
Plant part attacked: leaves
Vulnerable crop stages: from seedling to flowering
Damage characteristics: rolled leaf; heavy infestation makes the plant look burnt; longitudinal white and transparent streaks on leaf blades



CASEWORM/CASE BEARER *Nymphula depunctalis* (Guen.)
Filipino names: mambibilot, uod na nasa supot
Damaging stage: larval stage
Plant part attacked: leaves
Vulnerable crop stages: from seedling to flowering
Damage characteristics: tips of leaves appear as if cut by scissors; loss of photosynthetic tissue can be critical and seedlings may die; ladder-like appearance of removed tissues or green portions; presence of larval cases where larva dwells



WHORL MAGGOT *Hydrellia philippina* (Fenno)
Filipino names: langaw palay, langaw bukid
Damaging stage: larval stage
Plant part attacked: leaves
Vulnerable crop stages: tillering
Damage characteristics: pinhole feeding areas on the leaves with white and yellowish linear patches near the edges of leaves; stunted plants with few tillers



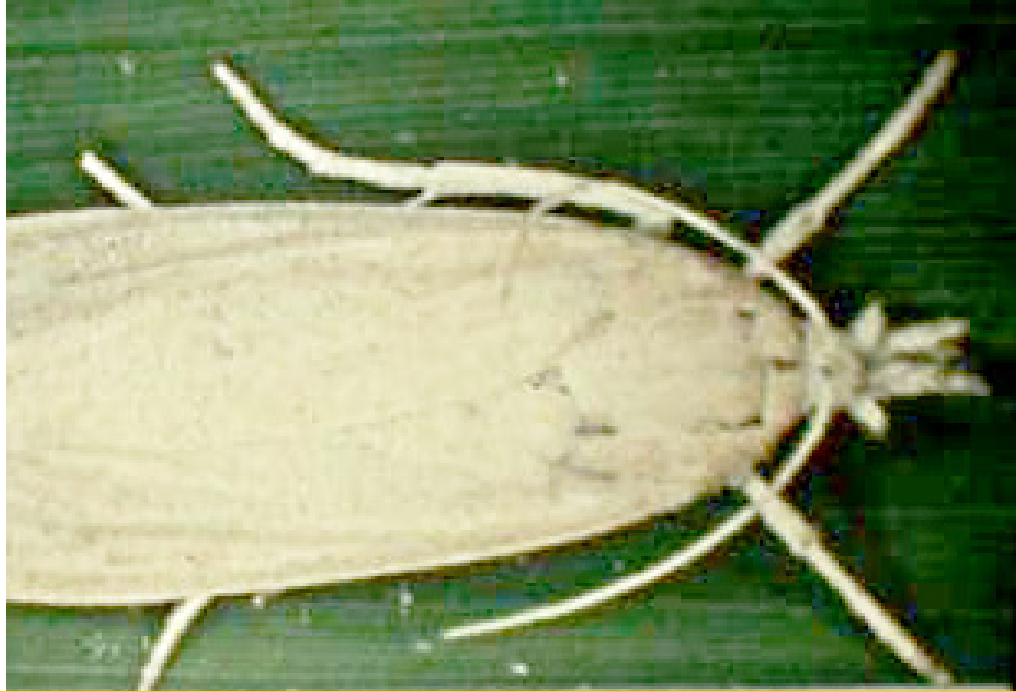
SHORT-HORNED GRASSHOPPER *Oxya hyla intricata* (Stål)
Filipino names: balang, lukton
Damaging stage: nymph and adult stages
Plant part attacked: leaves
Vulnerable crop stages: all stages
Damage characteristics: nymphs eat newly-germinated rice seedlings; if emerging flowers are attacked, the grains become chaffy; damaged leaves with holes, leaf margins intact and appear ragged; may cause defoliation at high infestation



ARMYWORM *Mythimna unipuncta* (Haworth)
Filipino names: arabas, harabas, tagustos
Damaging stage: larval stage
Plant part attacked: leaves
Vulnerable crop stages: from seedling to ripening
Damage characteristics: young plants are cut at ground level while older plants are defoliated



PINK/PURPLE STEM BORER *Sesamia inferens* (Walker)
Filipino name: mala rosa na aksip
Damaging stage: larval stage
Plant part attacked: stem
Vulnerable crop stages: from tillering to reproductive
Damage characteristics: larvae bore into the rice stems and hollow out the stem completely; in young plants, the central leaf whorl does not unfold, turns brownish, and dries up (deadheart); in older plants, the panicle dries up with unfilled grains and turns white (whitehead)



STRIPED STEM BORER *Chilo suppressalis* (Walker)
Filipino name: guhitang aksip
Damaging stage: larval stage
Plant part attacked: stem
Vulnerable crop stages: from tillering to ripening
Damage characteristics: larvae bore into the rice stems and hollow out the stem completely; in young plants, the central leaf whorl does not unfold, turns brownish, and dries up (deadheart); in older plants, the panicle dries up with unfilled grains and turns white (whitehead)

PHILRICE CENTRAL EXPERIMENT STATION, Maligaya, Science City of Muñoz, 3119 Nueva Ecija
BRANCH STATIONS:
PhilRice Batac, MMSU Campus, Batac City, 2906 Ilocos Norte; Mobile: 0919-944-3016 Email: batac_1.station@philrice.gov.ph
PhilRice Isabela, Malasin, San Mateo, 3318 Isabela; Mobile: 0956-912-9043; Email: isabela.station@mail.philrice.gov.ph
PhilRice Los Baños, UPLB Campus, Los Baños, 4031 Laguna; Tel: (49) 501-1917; Mobile: 0993-631-9175; Email: losbanos.station@mail.philrice.gov.ph
PhilRice Bicol, Batang Ligao City, 4504 Albay; Tel: (52) 431-0122; 742-0690; -0684; Email: bicol.station@mail.philrice.gov.ph
PhilRice Negros, Cansilayan, Murcia, 6129 Negros Occidental; Mobile: 0912-638-5019; 0936-160-2498; Email: negros.station@mail.philrice.gov.ph
PhilRice Agusan, Basilisa, RT Romualdez, 8611 Agusan del Norte; Telefax: (85) 806-0463; Email: agusan.station@mail.philrice.gov.ph
PhilRice Midsayap, Bual Norte, Midsayap, 9410 North Cotabato; Mobile: 0938-374-1040 Email: midsayap.station@philrice.gov.ph

SATELLITE STATIONS:
Mindoro Satellite Station, Alacaak, Sta. Cruz, 5105 Occidental Mindoro • Mobile: 0919-495-9371
Samar Satellite Station, UEP Campus, Catarman, 6400 Northern Samar • Email: jasienes@exchange.philrice.gov.ph
Zamboanga Satellite Station, WMSU Campus, San Ramon, 7000 Zamboanga City • Mobile: 0975-526-0306; 0975-275-1175

DA-PhilRice Field Office, CMU Campus, Maramag, 8714 Bukidnon; Mobile: 0909-822-9813; Email: jasienes@exchange.philrice.gov.ph
Liaison Office, 3rd Floor, ATI Building, Elliptical Road, Diliman, Quezon City; Mobile: 0928-915-9628

PhilRice TV | www.philrice.gov.ph | 0917-111-7423 | DA-PhilRice | prri.mail@philrice.gov.ph

