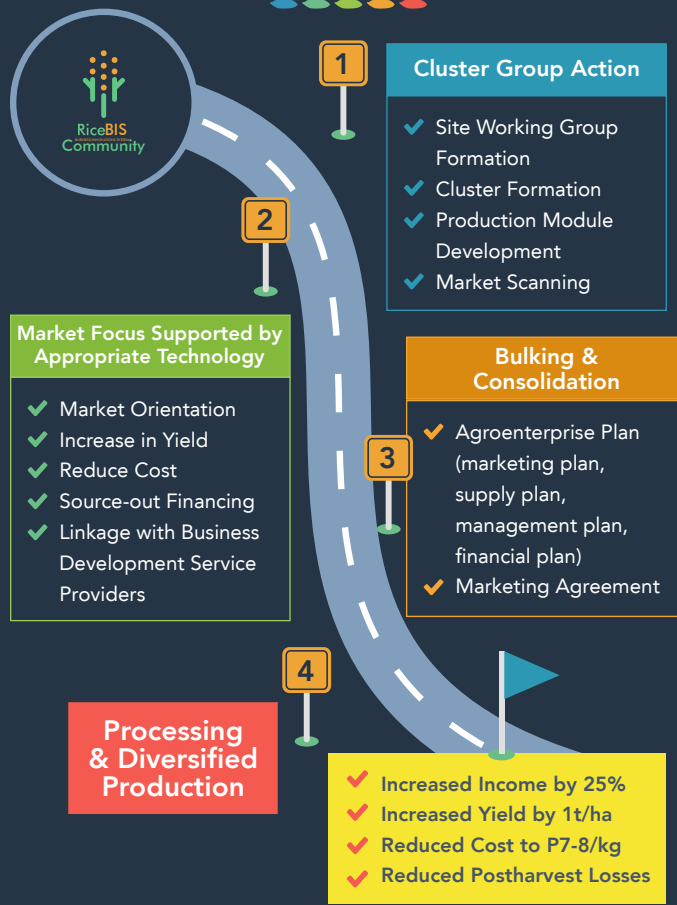


Our Operational/Target Areas

STATION	PROVINCE		RiceBIS		NO. OF CLUSTERS					
	Phase I	Phase II	Phase I	Phase II	Phase I		Phase II			
	2017	2020	2017	2020	2017	2018	2019	2020	2021	2022
CES	Nueva Ecija	Pangasinan	1	1	2	3	5	3	5	2
Batac	Ilocos Norte	Abra	1	1	2	3	3	3	3	2
Isabela	Isabela	Kalinga	1	1	2	2	4	2	4	2
Negros	Negros Occidental	Iloilo	1	1	2	2	3	2	3	2
Bicol	Albay	Samar	1	1	2	2	3	2	3	2
Los Banos	Quezon	Occidental Mindoro	1	1	2	3	3	3	3	2
Agusan	Agusan del Sur	Bukidnon	1	1	2	3	5	3	5	2
Midsayap	North Cotabato	Maguindanao	1	1	2	3	4	3	4	2
Subtotal			8	8	16	21	30	21	30	16
Total			16		134					

A RiceBIS Community, established within a province, shall form clusters within its geographical reach.

The RiceBIS Community Roadmap



CONTACT US

PhilRice Central Experiment Station

Maligaya, Science City of Muñoz, 3119 Nueva Ecija • Tel: (44) 456-0277
Direct line/Telefax: (44)456-0112 • Email: prri.mail@philrice.gov.ph

BRANCH STATIONS

PhilRice Agusan, Basilisa, RTRomualdez, 8611 Agusan del Norte
Tel: (85) 343-0778 • Tel/Fax: 343-0768 • Email: agusan.station@philrice.gov.ph

PhilRice Batac, MMSU Campus, Batac City, 2906 Ilocos Norte
Tel/Fax: (77) 772-0654; 670-1867 • Email: batac.station@philrice.gov.ph

PhilRice Bicol, Batang, Ligao City, 4504 Albay
Tel: (52) 284-4860; 0918-946-7439 • Email: bicol.station@philrice.gov.ph

PhilRice Isabela, Malasin, San Mateo, 3318 Isabela
Cell: 0917-5949285; 0908-895-7796 • Email: isabela.station@philrice.gov.ph

PhilRice Los Baños, UPLB Campus, Los Baños, 4030 Laguna
Tel: (49) 536-8620; 501-1917 • Email: losbanos@philrice.gov.ph

PhilRice Midsayap, Bual Norte, Midsayap, 9410 North Cotabato
Tel: (64) 229-8178 - Tel/Fax: 229-7242 • Email: midsayap.station@philrice.gov.ph

PhilRice Negros, Cansilayan, Murcia, 6129 Negros Occidental
Cell: 0928 - 520-4585 • Email: negros.station@philrice.gov.ph

PhilRice Field Office, CMU Campus, Maramag, 8714 Bukidnon
Cell: 0917-615-8710

Liaison Office, 3rd Floor, ATI Bldg, Elliptical Road, Diliman, Quezon City
Tel/Fax: (02) 920-5129 • Cell: 0920-906-9052

Samar Satellite Station, UEP Campus, Catarman, 6400 Northern Samar
Cell: 0948-800-5284

Mindoro Satellite Station, Alacaak, Santa Cruz, 2105 Occidental Mindoro
Cell: 0908-104-0855

PhilRice Text Center: 0920-911-1398 | www.facebook.com/rice.matters

@rice_matters | www.philrice.gov.ph • www.pinoyrice.com

Join our advocacy. Be our **PARTNER!**



How can we help our rice farmers?



Our Current Situation



Despite reaching a record high production of nearly 19 million tons of palay in 2014 and achieving 97% rice sufficiency level in 2013 (PSA, 2016), rice becomes more expensive and unaffordable especially among the poor Filipinos. The wholesale price of regular milled rice rose from PhP28/kg in 2010 to PhP37/kg in 2014. This only shows that in spite of the country's production achievements, it remains far from being rice secure.

The high cost of production is one of the reasons why rice is more expensive in the Philippines.

A farmer earns an average annual income per hectare of PhP50,000 from rice (BAS 2014), which is below the poverty threshold.



What is a RiceBIS Community?



It is a community of practice geared at developing rice and rice-based enterprises within a province to address farmers' needs - from production, to processing, to marketing - in a resilient and sustainable manner, ensuring available and affordable rice.



How can we help the farmers?



Increase Yield



Lower Production Cost

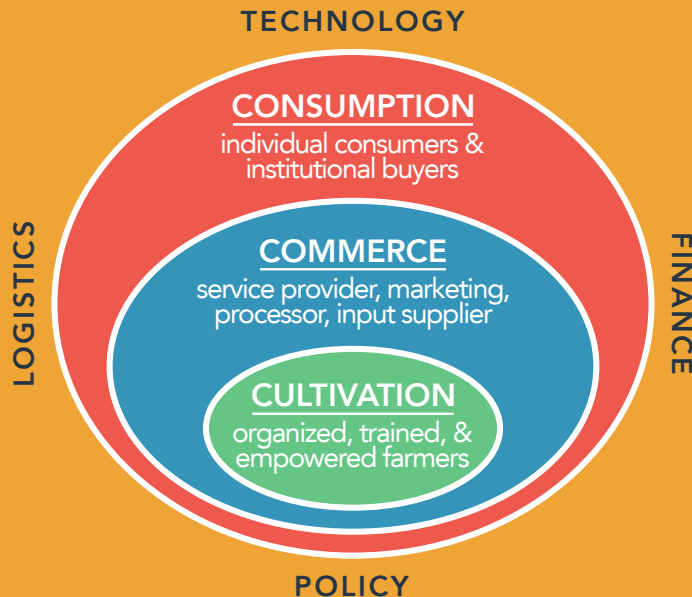


Link them to Market and Business Development Service (BDS) Providers

What are the Key Elements in Carrying out the Rice Business Innovations System (BIS)?



The essence of RiceBIS that we want to implement in the rice farming communities constitutes the following elements:



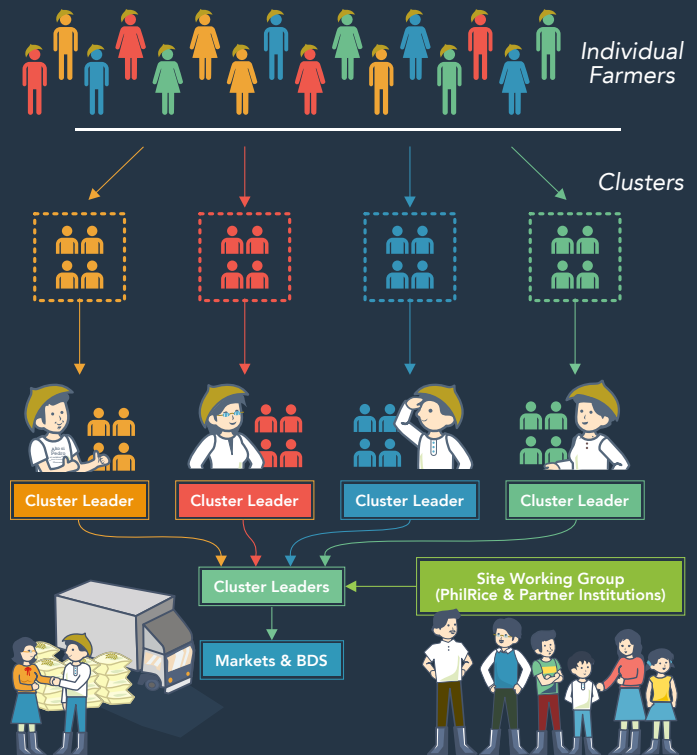
How We Will Do It



- 1 Partnership-building, site selection, and cluster formation
 - 2 Supply assessment and marketing
 - 3 Cluster commitment setting and strengthening of organization
 - 4 Agroenterprise plan and mobilization
 - 5 Cluster capacity enhancement
 - 6 Product supply organizing and processing
 - 7 Test marketing
 - 8 Sustained enterprises
- Toward New Clusters/Enterprises

Modified from CRS ■ Market Preparation & Farm Production ■ Market Engagement

How We Will Cluster* the Farmers



* A cluster, which is composed of 10-15 farmers, will run a particular rice-based enterprise.